

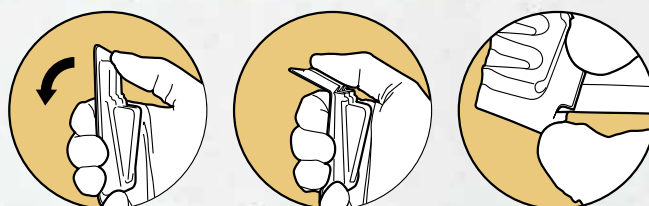
THE DOMINANT® BAIT STATION —

OH, SNAP!

BIGGER • BETTER • FASTER

DominAnt Liquid Ant Bait is super attractive to ants and the bait station is easy to use. No scissors or knife is needed—just snap open the bait station, lock the lid and place the station...then watch ants flock to it!

Compared to our previous station, each DominAnt bait station contains 30% more liquid, plus there are two more stations per box. That's 56% more killing power per box for you—and DominAnt is a professional product so your customers won't see it in stores.



Remember, always read, understand and comply with the label. DominAnt and Nisus Corporation are registered trademarks of Nisus Corporation. ©2017 Nisus Corporation #DOM-FLY-0117



APPLICATION:

Click open bait station to expose entry ports. Lock and place station in locations where ant traffic is visible.

TARGET PESTS:



ANTS



CREATING A WORLD
OF SUSTAINABILITY.

DOMINANT®

ACTIVE INGREDIENT: 5.4% BORAX



100 NISUS DRIVE • ROCKFORD, TN 37853
800.264.0870 • WWW.NISUSCORP.COM

DOMINANT™

Liquid Ant Bait

- Kills and Controls Sweet Eating Ants • Contains Borax • No Offensive Odors
- Use Indoors and Outdoors • Kills the Queen and the Colony • Ready to Use

ACTIVE INGREDIENT:

Sodium Tetraborate Decahydrate (Borax)..... 5.4%

OTHER INGREDIENTS 94.6%

TOTAL 100.0%

EPA Reg. No. 64405-23 EPA Est. 64405-TN-1

Keep Out of Reach of Children

For Use In and Around: Apartments, boats, cafeterias, commercial and cruise ships, dairies, food processing plants, garages, grocery stores, homes, hospitals, hotels, institutional buildings, kennels, military bases, military ships, mills, mobile homes, motels, nursing homes, pet stores, public and private institutions, restaurants, schools, storage areas, supermarkets, theaters, vending machines, warehouses and zoos.

Apply Near, On or Into: Appliances, bathrooms, baseboards, corners, cracks, crawl spaces, crevices, decks, dining rooms, edible waste storage areas, fences, floors, food storage areas, foundations, garages, kitchens, janitorial closets, loading docks, liquid bait stations, locker rooms, maintenance rooms, mechanical rooms, offices, packing areas, pallets, piers, processing areas, receiving areas, storage areas, trash rooms, trees, utility rooms, vending machines, walls and other areas ants may forage.

Attracts and Kills All Common Household Ants Including: Acrobat ants, Argentine ants, big-headed ants, cornfield ants, crazy ants, ghost ants, little black ants, odorous house ants, pavement ants, white-footed ants and other sweet-eating ants (except pharaoh, carpenter, fire and harvester ants).

PRECAUTIONARY STATEMENTS

Environmental Hazards: Do not apply directly to water, to areas where surface water is present, or to intertidal areas below the mean high-water mark. Do not contaminate water when disposing of equipment washwaters or rinsate.

Physical/Chemical Hazards: Do not mix or allow contact with an oxidizing agent. Hazardous chemical reaction may occur.

NOTICE

Read and understand the entire label before using. Use only according to label directions.

Before buying or using this product, read the **Warranty Disclaimer** and **Limitation of Remedies** statement found elsewhere on this label. If terms are unacceptable, return unopened package to seller for full refund of purchase price. Otherwise, use by the buyer or any other user constitutes acceptance of the terms under the **Warranty Disclaimer** and **Limitation of Remedies**.

DIRECTIONS FOR USE

It is a violation of Federal law to use this product in a manner inconsistent with its labeling.

Place bait in areas inaccessible to children and pets.

DominAnt Liquid Ant Bait may be used full strength or can be diluted with water to obtain a 1% or 2% solution. Use a 1%

solution if evaporation is a concern and a 2% solution for large infestations. Use full strength for all other situations.

Do not contaminate this product with other pesticides. If this product becomes contaminated with another pesticide it will lose its effectiveness. Do not apply directly to food and avoid contamination of feed and foodstuff. Do not treat pets with this product. Place stations in areas accessible to insects but inaccessible to children and pets.

Dilution Instructions

1% Dilution: Add 1 part DominAnt Liquid Ant Bait to 5 parts water. Mix thoroughly.

2% Dilution: Add 1 part DominAnt Liquid Ant Bait to 2 parts water. Mix thoroughly.

1% Dilution

DominAnt	+	Water	=	Finished Product
5 fl. oz.	+	25 fl. oz.	=	1 Quart (approximately)
20 fl. oz.	+	100 fl. oz.	=	1 Gallon (approximately)
1 gallon	+	5 gallons	=	6 gallons

2% Dilution

DominAnt	+	Water	=	Finished Product
10 fl. oz.	+	20 fl. oz.	=	1 Quart (approximately)
42 fl. oz.	+	84 fl. oz.	=	1 Gallon (approximately)
1 gallon	+	2 gallons	=	3 gallons

Bait Stations: Add the undiluted 5.4% or the diluted 2% or 1% DominAnt Liquid Ant Bait solution into bait stations designed to hold liquid bait. Follow directions included with the bait stations to obtain best results.

Application for Food Processing and Handling Establishments, Including Federally Inspected Poultry and Meat Plants: In food areas, only apply product into cracks, crevices and other inaccessible areas. Avoid contamination of food and feed stuffs. Cover or remove any food during application. Do not apply product directly onto a surface where food is prepared, served or stored. Any product left visible on a food surface after treatment should be removed and surface washed. In food handling and other areas, record the number and location of bait stations. This product is designed to be used as a residual treatment in an Integrated Pest Management program incorporating good sanitation practices.

Food Areas Include: Serving areas, such as dining rooms, food storage areas, receiving areas, processing areas, including enclosed systems such as oil and syrup plants, mills and dairies; packing areas, including canning, bottling, wrapping and boxing; and edible waste storage areas. In these areas, direct product

applications into cracks and crevices, such as along baseboards and between elements of construction. Do not allow product on any surfaces that may be contacted by food. Do not apply when facility is in operation or when food is exposed.

Non-Food Areas Include: Bathrooms, locker rooms, offices, maintenance rooms, mechanical rooms, trash rooms, garages, janitorial closets, storage areas after bottling or canning and floor drains leading to sewer entries. In these areas, apply product as labeled for other non-food areas.

STORAGE AND DISPOSAL

Do not contaminate water, food or feed by storage and disposal.

PESTICIDE STORAGE: Store in a cool dry place. Do not store where children or animals may gain access. **PESTICIDE DISPOSAL AND CONTAINER HANDLING:** Nonrefillable Container. Do not reuse or refill this container. **If empty:** Place in trash or offer for recycling if available. **If partly filled:** Call your local solid waste agency for disposal instructions. Never place unused product down any indoor or outdoor drain.

WARRANTY DISCLAIMER

To the extent not prohibited by applicable law, Manufacturer warrants that this product conforms to the chemical description on the label and is reasonably fit for the purposes stated on the label when used in strict accordance with the directions, subject to the inherent risks set forth below. To the extent not prohibited by applicable law, **MANUFACTURER MAKES NO OTHER EXPRESS OR IMPLIED WARRANTY OF MERCHANTABILITY, FITNESS FOR A PARTICULAR PURPOSE OR ANY OTHER EXPRESS OR IMPLIED WARRANTY.**

Inherent Risks of Use

The directions for use of this product are believed to be adequate and must be carefully followed. It is impossible to eliminate all risks associated with use of this product. Lack of performance or other unintended consequences may result because of such

factors as use of the product contrary to label instructions, abnormal conditions, the presence of other materials, climatic conditions or the manner of use/application, all of which are beyond the control of the Manufacturer. To the extent not prohibited by applicable law, the buyer/user assumes all such risks.

Limitation of Remedies

To the extent not prohibited by applicable law the exclusive remedy for losses or damages resulting from this product (including claims based on contract, negligence, strict liability or other legal theories) shall be limited to, at Manufacturer's election, one of the following:

1. Refund of purchase price paid by buyer or user for product bought, or
2. Replacement of amount of product used.

To the extent not prohibited by applicable law: a) Manufacturer shall not be liable for losses or damages resulting from handling or use of this product unless Manufacturer is promptly notified of such loss or damage in writing; and b) **TO THE EXTENT NOT PROHIBITED BY APPLICABLE LAW IN NO CASE SHALL MANUFACTURER BE LIABLE FOR CONSEQUENTIAL OR INCIDENTAL DAMAGES OR LOSSES, INCLUDING WITHOUT LIMIT, HEALTH RELATED DAMAGES OR INJURIES.**

The terms of this **Warranty Disclaimer** and **Limitation of Remedies** cannot be varied by any written or verbal statements or agreements. No employee or sales agent of Manufacturer or the seller is authorized to vary or exceed the terms of this **Warranty Disclaimer** or **Limitation of Remedies** in any manner.

It is not intended that this product be used to practice any applicable patent, whether mentioned or not, without procurement of a license, if necessary, from the owner, following investigation by the user.



Nisus Corporation
100 Nisus Drive • Rockford, TN 37853 USA
(800) 264-0870

DominAnt and Nisus Corporation are trademarks or registered trademarks of Nisus Corporation.
©2015 Nisus Corporation #DOM-SL-1015a-SAL122216

SAFETY DATA SHEET

DOMINANT™

Liquid ant bait

Health Emergencies: INFOTRAC® (800) 535-5053

1. PRODUCT AND COMPANY INFORMATION

Product Identity: DOMINANT™ Liquid Ant Bait

Recommended use of the chemical and restrictions on use: Kills and controls sweet eating ants. Read and understand the entire label before using. Use only according to label directions. It is a violation of Federal law to use this product in a manner inconsistent to label directions.

Manufacturer: Nisus Corporation
100 Nisus Drive
Rockford, TN 37853

Telephone: Phone: (800) 264-0870
Fax: (865) 577-5825

Emergency Phone: 800-535-5053 (INFOTRAC)

SDS Date of Preparation: 01/12/16

2. HAZARDS IDENTIFICATION

GHS Classification:

Physical	Health	Environment
Not Hazardous	Not Hazardous	Not Hazardous

GHS Label Elements:

None Required

Statements of Hazard

None Required

Precautionary Statement

None Required

3. COMPOSITION/INFORMATION ON INGREDIENTS

Component	CAS No.	Amount
Non-Hazardous Ingredients	Proprietary	94.6%
Sodium Tetraborate Decahydrate (Borax)	1303-96-4	5.4%

The exact formulation is being withheld as a trade secret.

4. FIRST AID MEASURES

Eye: Flush victim's eyes with large quantities of water, while holding the eyelids apart. Get medical attention if irritation develops or persists.

Skin: Wash skin thoroughly with soap and water. Get medical attention if irritation develops. Remove and launder clothing before re-use.

Ingestion: Do not induce vomiting unless directed to do so by a medical professional. Get medical attention for large ingestions or if symptoms develop or if you feel unwell.

Inhalation: Remove victim to fresh air. If breathing is difficult or irritation persists, get medical attention.

Most important Symptoms: May cause slight eye irritation.

Indication of immediate medical attention/special treatment:

Immediate medical attention should not be required.

5. FIRE FIGHTING MEASURES

Suitable (and Unsuitable) Extinguishing Media: Use media appropriate for surrounding fire.

Specific hazards arising from the chemical: Burning may produce carbon monoxide and carbon dioxide.

Special Protective Equipment and Precautions for Fire-Fighting Instructions: Firefighters should wear positive pressure self-contained breathing apparatus and full protective clothing.

6. ACCIDENTAL RELEASE MEASURES

Personal Precautions, Protective Equipment, and Emergency Procedures: Wear appropriate protective clothing as described in Section 8.

Methods and Materials for Containment and Cleaning Up: Collect with an inert absorbent and place in appropriate containers for disposal. Clean spill area thoroughly. Prevent spill from entering sewers and watercourses. Report releases as required by local, state and federal authorities.

7. HANDLING AND STORAGE

Precautions for Safe Handling: Avoid contact with the eyes, skin and clothing. Wear protective clothing and equipment as described in Section 8. Wash thoroughly with soap and water after handling. Remove contaminated clothing immediately and wash before reuse. Remove PPE immediately after handling. Wash thoroughly after using and change into clean clothing. Do not apply this product in a way that will contact workers or other persons. Only protected handlers may be in the area during application. Keep containers closed when not in use. Refer product label for additional information on use and handling.

Nonrefillable container. Do not reuse containers. Empty containers retain product residues and can be hazardous. Follow all SDS precautions when handling empty containers.

Conditions for Safe Storage, Including Any Incompatibilities:

Store in a cool, dry area away from incompatible materials. Keep containers closed when not in use. Do not store where children or animals may gain access.

8. EXPOSURE CONTROLS/PERSONAL PROTECTION

Exposure Guidelines:

Sodium Tetraborate Decahydrate (as borate compounds)	2 mg/m3 TWA, 6 mg/m3 STEL ACGIH TLV (Inhalable)
--	---

Engineering Controls: Use with adequate ventilation to maintain exposure levels below the occupational exposure limits. Refer product label for additional information.

Respiratory Protection: In operations where exposure levels are exceeded, a NIOSH approved respirator with dust/mist cartridges appropriate for the form and concentration of the contaminants should be used. Selection and use of respiratory equipment must be in accordance with OSHA 1910.134 and good industrial hygiene practice. Refer to the product label for additional information.

Skin Protection: Use waterproof gloves for normal application of this product.

Eye Protection: Wear safety glasses to prevent eye contact.

Other: Wear long-sleeve shirts, long pants, socks and shoes when using this product. Suitable washing facilities should be available in the work area.

9. PHYSICAL AND CHEMICAL PROPERTIES

Appearance And Odor: Clear odorless liquid

Physical State: Liquid **Odor Threshold:** Not established

Vapor Density: N/A **Initial Boiling Point/Range:** 104°C (220°F)

Solubility In Water: 100% **Vapor Pressure:** Not determined

Relative Density: Not determined

Evaporation Rate: Not determined

Melting/Freezing Point: N/A **pH:** 7.12

Percent Volatile: None

Octanol/Water Coefficient: N/A

Solubility: Soluble in water

Decomposition Temperature: N/A

Viscosity: Not determined

Flammability (solid, gas): N/A

Flashpoint: Not flammable

Autoignition Temperature: None

Flammable Limits: LEL: Not determined

UEL: Not determined

10. STABILITY AND REACTIVITY

Reactivity: Not normally reactive

Chemical Stability: Stable under normal storage and handling conditions.

Possibility of Hazardous Reactions: Contact with oxidizing agents may cause an adverse reaction.

Conditions to Avoid: None known.

Incompatible Materials: Avoid oxidizing agents.

Hazardous Decomposition Products: When heated to decomposition emits carbon monoxide and carbon dioxide.

11. TOXICOLOGICAL INFORMATION

HEALTH HAZARDS:

Ingestion: May be harmful if large quantities are ingested.

Eye: May cause slight irritation.

Skin: Not expected to cause irritation.

Chronic: Borates have been shown to have some chronic toxicity in animals fed high doses, similar to that of alcohol, but this has not been found in humans.

Sensitization: This material is not expected to cause sensitization.

Carcinogenicity: None of the components is listed as a carcinogen or suspected carcinogen by IARC, NTP or OSHA.

Germ Cell Mutagenicity: No data available

Reproductive Toxicity: Borates have been found to have some reproductive toxicity in animals, but this has not been found in humans.

Numerical Measures of Toxicity:

Product Toxicity Data:

Oral rat LD₅₀: >5000 mg/kg, Dermal rabbit LD₅₀: >2000 mg/kg

12. ECOLOGICAL INFORMATION

This product breaks down naturally in the environment to provide organic matter and boron micro nutrients. Boron occurs naturally in sea water at an average concentration of 5 mg B/l and fresh water at 1 mg B/l or less. In dilute aqueous solutions the predominant boron species present is undissociated boric acid.

Ecotoxicity:

Sodium Tetraborate Decahydrate: 96hr LC₅₀ Common Dab: 74 mg B/L, 48hr LC₅₀ Daphnia magna: 530 mg B/L, 96hr EC₁₀ Green algae: 24 mg B/L

Persistence and Degradability: Boron is naturally occurring and ubiquitous in the environment. Dominant Liquid Ant Bait decomposes in the environment to natural borate.

Bioaccumulative Potential: Not determined.

Mobility in Soil: Not determined.

Other Adverse Effects: Some plants are sensitive to boron. Avoid releases into the environment. This product is designed to be used for certain types of insects. Use product only as directed on the label. Do not apply directly to water, to areas where surface water is present or to intertidal areas below the mean high-water mark. Do not contaminate water when disposing of equipment washwaters or rinsate. See product label for full instructions and restrictions on use.

13. DISPOSAL CONSIDERATION

Do not contaminate water when disposing of equipment washwaters or rinsate. Wastes resulting from the use of this product may be disposed of on site or at an approved waste disposal facility. Non-refillable container; do not reuse or refill this container. Completely empty container into application equipment, then offer for recycling, if available; otherwise dispose of empty container in a sanitary landfill or by incineration. Never place unused product down any indoor or outdoor drain. Dispose in accordance with local, state and federal environmental regulations.

14. TRANSPORTATION INFORMATION

DOT Hazardous Materials Description: Not Regulated

15. REGULATORY INFORMATION

This chemical is a pesticide product registered by the United States Environmental Protection Agency and is subject to certain labeling

requirements under federal pesticide law. These requirements differ from the classification criteria and hazard information required for safety data sheets (SDS), and for workplace labels of non-pesticide chemicals. The hazard information required on the pesticide label is reproduced below. The pesticide label also includes other important information, including directions for use.

FIFRA Labeling:

Dominant Liquid Ant Bait

EPA Reg. No. 64405-23

Keep Out of Reach of Children

PRECAUTIONARY STATEMENTS

Environmental Hazards: Do not apply directly to water, to areas where surface water is present, or to intertidal areas below the mean high-water mark. Do not contaminate water when disposing of equipment washwaters or rinsate.

Physical/Chemicals Hazards: Do not mix or allow contact with oxidizing agent. Hazardous chemical reaction may occur.

CERCLA: This product is not subject to reporting under CERCLA. Some states have more stringent reporting requirements. Report all spills in accordance with local, state, and federal regulations.

SARA Hazard Category (311/312): Not hazardous

SARA 313: This product contains the following chemicals subject to Annual Release Reporting Requirements Under SARA Title III, Section 313 (40 CFR 372):

None

EPA TSCA Inventory: This product is regulated under FIFRA, thus exempt.

16. OTHER INFORMATION

NFPA Rating:

Health = 0 Flammability = 0 Instability = 0

HMIS Rating:

Health = 1 Flammability = 0 Physical Hazard = 0

SDS Revision History: 03/26/15: New SDS

01/12/16: Revised

WARRANTY DISCLAIMER

The information, data and recommendations contained herein are believed to be accurate but may not be all inclusive and should only be used as a guide. The information is furnished upon the condition that the person receiving it shall make his own determination of the suitability of the product for his particular use and on condition that they assume the risk of the use thereof. With respect to this publication and the product related thereto, unless otherwise expressly provided by Manufacturer in writing, **MANUFACTURER MAKES NO EXPRESS OR IMPLIED WARRANTY OF MERCHANTABILITY, FITNESS FOR A PARTICULAR PURPOSE OR ANY OTHER EXPRESS OR IMPLIED WARRANTY.**

Remedy/Liability Limits

The exclusive remedy for losses or damages resulting from this publication or the related product (including claims based on contract, negligence, strict liability or other legal theories) shall be limited to, at Manufacturer's sole election, one of the following:

1. Refund of purchase price paid by buyer or user for product bought, or
2. Replacement of amount of product used.

Manufacturer shall not be liable for losses or damages resulting from use of this publication or handling or use of this product, **IN NO CASE SHALL MANUFACTURER BE LIABLE FOR CONSEQUENTIAL OR INCIDENTAL DAMAGES OR LOSSES, INCLUDING WITHOUT LIMIT, HEALTH RELATED DAMAGES OR INJURIES.**

The terms of this **Warranty Disclaimer** and **Remedy/Liability Limits** cannot be varied by any written or verbal statements or agreements. No employee or sales agent of Manufacturer or the seller is authorized to vary or exceed the terms of this **Warranty Disclaimer** or **Limitation of Remedies** in any manner.



100 Nisus Drive • Rockford, TN 37853 USA • (800) 264-0870

DominAnt and Nisus Corporation are trademarks or registered trademarks of Nisus Corporation. ©2016 • #DOM-SDS-011216a

NOTES



100 Nisus Drive • Rockford, TN 37853 USA
800-264-0870